



Part of the  S.E.A GROUP

Greenhithe Electrical Services Ltd

Company Services

"At Greenhithe Electrical Services Ltd, we are committed to providing comprehensive, top-tier solutions for our clients. Our relentless dedication, coupled with an unwavering focus on industry excellence, ensures our success and pride in delivering high-quality work. This commitment fosters enduring relationships, unlocks new avenues, and cultivates a loyal base of returning clients, making us the go-to choice in the industry."

Alfie Johnson, Managing Director



The GES Vision



Part of the  S.E.A GROUP

Flexibility, Quality
INTEGRITY & VALUE

To provide a

Customer focussed team
delivering flexible quality
services with integrity &
value

To be our customers

Preferred supplier of needs based
solutions & services

Services

- Electrical
- Fire systems
- Security
- Audio & Visual
- Smart homes
- Access Control
- Doors
- Mechanical
- Ventilation
- Fit out
- Isolations & Temporary Power

Guildford Borough Council & Harrow Council

In both the Guildford Borough Council and Harrow Council, we have effectively managed more than 600 electrical tests, rewiring projects, kitchen and bathroom improvements, as well as security upgrades. This included the design, installation and commissioning of CCTV systems, door and door entry solutions throughout different sheltered Schemes. We installed over 800 cameras and customised security systems.

- Electrical
- Emergency lighting
- LD2 main smoke upgrades
- Ventilation
- Fire systems
- CCTV & Intruder alarm
- Door entry & KMS
- Doors
- Audio & Visual
- Mechanical
- Submain upgrades





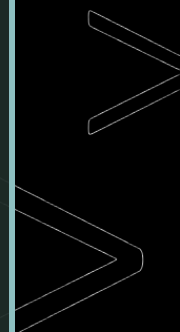
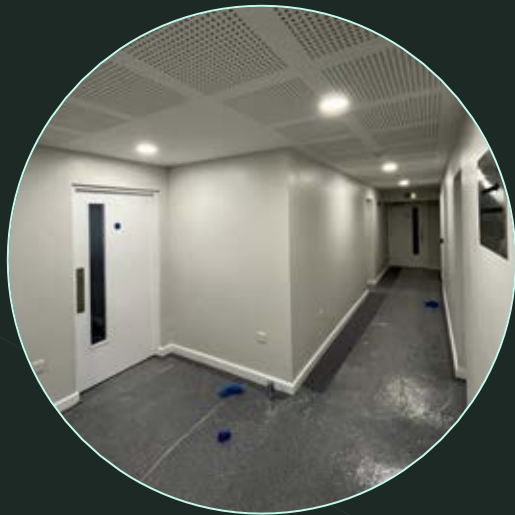


Clarion Housing

Contributing to a housing complex comprising 30 flats, complete with communal spaces, situated at Cushing House, Purley. Undertaking comprehensive design, installation, and commissioning of electrical systems, tailored to meet the high standards and modern requirements of this prominent development.

- Electrical
- Emergency lighting
- Ventilation
- CCTV
- Door entry & KMS
- Fire systems
- AOV
- Submain and intake risers
- Plant rooms
- Containment & Mechanical

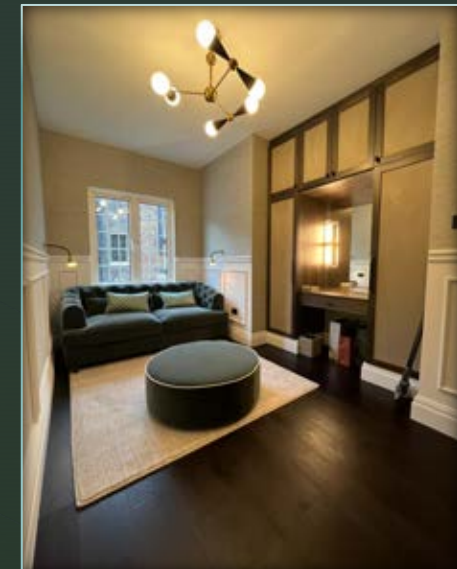




A&C 22 Group

Situated in Ovington Square, Knightsbridge, we are honoured to have applied our expertise to this prestigious development. Focusing on bespoke electrical and security solutions, our thorough design, installation, and commissioning procedures guarantee a unique, high-quality standard tailored to meet the specific demands of our esteemed client.

- Electrical
- Bespoke lighting
- Ventilation
- CCTV & Intruder alarm
- Door entry
- Audio & Visual





Portman Homes

At our Heron Wood project in Sevenoaks, our proficiency stands out in the creation of a 3-plot new build venture. We specialise in the meticulous design, installation, and commissioning of personalised electrical and security solutions, ensuring a tailor-made, high-caliber finish that seamlessly matches the distinctive requirements of the project.

- Electrical
- Bespoke lighting
- Ventilation
- CCTV & Intruder alarm
- Door entry
- Audio & Visual
- Mechanical





Guardian Builders

Situated in Essex, our exceptional rebuild and development project stands as a testament to bespoke craftsmanship. We specialise in creating tailored electrical and security solutions, meticulously designed, installed, and commissioned to elevate the project's standards, ensuring a unique, high-quality result that exceeds expectations.

- Electrical
- Bespoke lighting
- Fire systems
- Ventilation
- CCTV & Intruder alarm
- Door entry
- Audio & Visual
- Smart home
- Mechanical



HJJ Developments

We offer a comprehensive turnkey solution for all electrical requirements within a variety of development projects spanning London and Kent. Our expertise incorporates seamless implementation and management of diverse electrical initiatives, ensuring a holistic approach to each project's electrical needs, guaranteeing top-tier quality and functionality throughout.

- Electrical
- Bespoke lighting
- Fire systems
- Ventilation
- CCTV & Intruder alarm
- Door entry
- Audio & Visual
- Smart home
- Mechanical





Seville Developments

GES takes pride in being the first installer in the UK to install the cutting edge Aereco ventilation system. This installation initiative includes Barret and Bedwell House in Brixton, with the system being implemented in each flat within these residences. This marks a significant milestone in advancing ventilation technology and underscores our commitment to delivering innovative solutions in residential environments.

- Electrical
- Fire systems
- Ventilation
- Mechanical



Telehouse Europe

We specialised in a Cat A fit-out for diverse areas within Telehouse Europe's primary operational facility in London. Our expertise lies in creating tailored, professional-grade solutions for these spaces, ensuring they meet the highest standards of quality, functionality, and design, specifically customized to Telehouse Europe's main operation building.

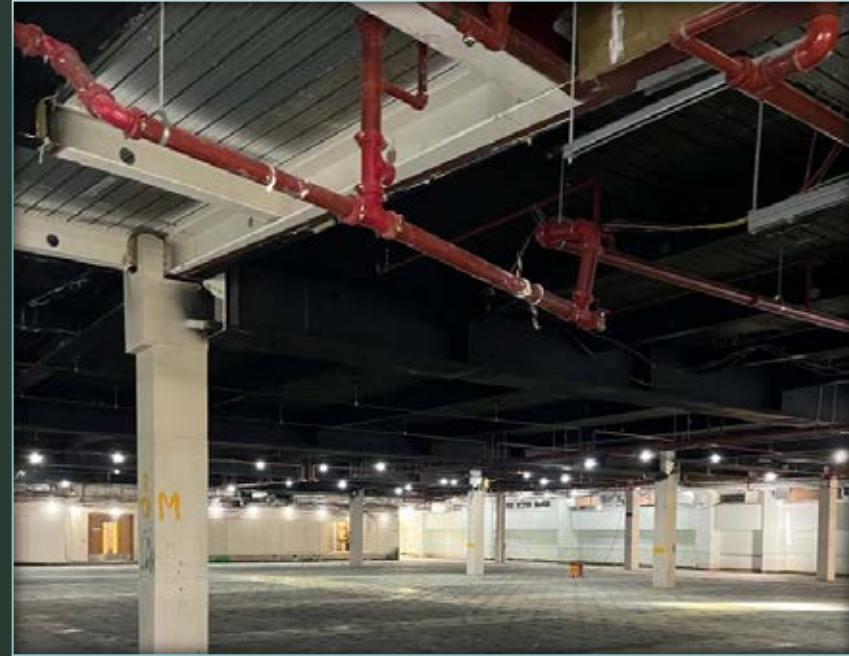
- Electrical
- Fire systems
- Ventilation
- Cat A fit out



Type Ten

We specialise in executing comprehensive electrical and fire isolation services, encompassing the design, installation, and commissioning of temporary power, fire systems, and lighting across multiple sites in and around London. Our portfolio boasts successful completion of these meticulously executed projects, reflecting our commitment to excellence and proficiency in the field.

- St Martin Le Grand
- Leadenhall Street
- 7 Burlington Gardens
- 164 Shaftsbury Avenue
- 102 Clerkenwell Road
- Westfield - White Hart Lane
- Blackfrairs Crown Court
- 65 Fleet Street
- Queens Road



Contact us

Greenhithe Electrical Services Ltd
36 Pearson Way
Questor
Dartford
DA1 1JN

Email: office@ges1.co.uk

Telephone: 01322 941 068

Website: www.ges247.co.uk

Linkedin: [Greenhithe Electrical Services Ltd](#)

Instagram: [GES_247](#)



Part of the  S.E.A GROUP